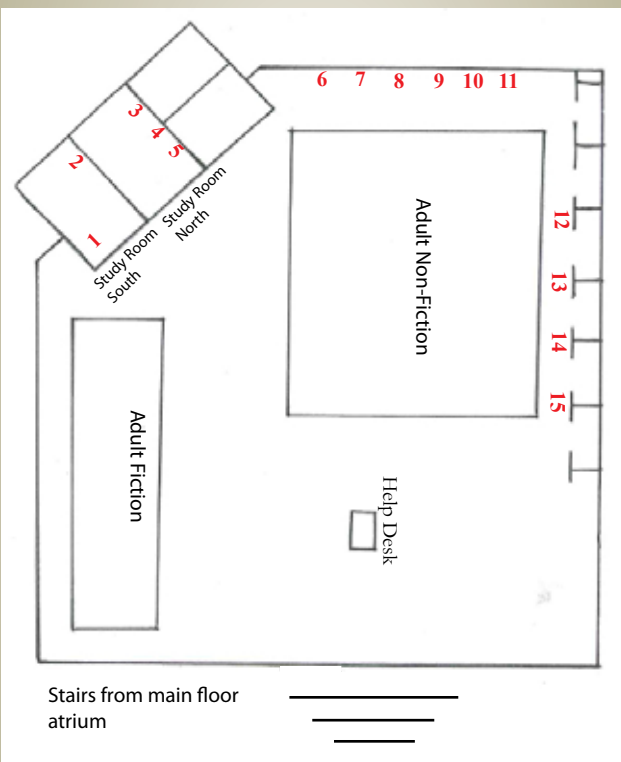


## Carleton Watkin's Yosemite Prints in the Library

### Adult Services



## FOR MORE INFORMATION ON CARLETON WATKINS

Explore his file in the Local History Center off the mallway adjacent to the library.

Contact by phone at:  
882-7277 ext. 2160



## BOOKS

Call number

*Carleton E. Watkins: Photographs 1861-1874* 979 WAT

By: Peter E. Palmquist

*Carleton E. Watkins: Photographer of the American West.* 779.9978 PAL Oversize

By: Peter E. Palmquist

*Carleton Watkins: Photographs from the J. Paul Getty Museum.* 779.092 WAT

By: The J. Paul Getty Museum

## ONLINE

[www.carletonwatkins.org](http://www.carletonwatkins.org)

[www.nga.gov/exhibitions/watkins-bro.htm](http://www.nga.gov/exhibitions/watkins-bro.htm)

[www.smithsonianmag.com/people-places/carleton-watkins.html](http://www.smithsonianmag.com/people-places/carleton-watkins.html)



## CARLETON E. WATKINS



Western Landscape  
Photographer

Guide to the images in the  
Westerville Public Library

## WATKINS BIOGRAPHY

While the Gold Rush of 1849 had created many mining towns, the American West that Carleton Watkins reached in 1851 was still largely untouched by human hands. Within a few short years, Watkins had settled into his new Californian home and found his life's calling in landscape photography.

His most famous works, by far, are the series of photographs of what would become Yosemite National Park. The circumstances under which Watkins took the photographs was intense. He transported 8-by-10 plates of glass into Yosemite by burro pack. He then developed the wet plate film onsite in a dark tent. These photographs were instrumental in convincing Congress to prevent future development of that area. In fact, Yosemite was the first area set aside and preserved by Congress. In addition, he documented much of the West Coast landscape in assignments for commercial enterprises.



Professional recognition often eluded Watkins during his lifetime as his financial troubles frequently overshadowed his technical mastery. However, in the years following his death in 1916, he has been credited as the foremost landscape photographer of his time.

*Biographical Information from Carleton E. Watkins:  
Photographer of the American West.  
By: Peter E. Palmquist*

## COLLECTION AT THE WESTERVILLE PUBLIC LIBRARY



In 1973, when the former Anti-Saloon League headquarters building was donated to the Westerville Public Library, workers found a leather-bound volume of 62 vintage Carleton Watkins photographs. This portfolio is now owned by the Westerville Library and kept in the archives of the Ohio Historical Society.

The Watkins collection at the library is one of six collections in the United States. The photographs are landscapes of mid-1860s Yosemite National Park, including water, trees and rock formations.

Copies of fifteen original prints have been framed and can be viewed on the second floor of the library. This guide identifies and locates each print, beginning with three hanging in Study Room South. (See map on flap.)

## Watkins' Prints on Display in the Library (Map on back)

1. Pompomasos, Three Brothers, 4480 ft., Yosemite, 1861
2. Yosemite Falls from Sentinel Dome 1865-66
3. Mirror View of the North Dome, Yosemite, c. 1865-66
4. North Dome, 3730 ft., Yosemite, 1865-66
5. View down the Valley from near the Ferry, Yosemite, 1865-66
6. Washington Column, 2052 ft., Yosemite 1865-66
7. Riverview up the Valley, c. 1865-66
8. El Capitan, c. 1865-66
9. The Half Dome from Glacier Point, Yosemite, c. 1866
10. Mt. Starr King, Yosemite, c. 1865-66
11. North Dome, Royal Arches--Washington Column, Yosemite, 1861
12. Part of the Trunk of the "Grizzly Giant" with Clark, Mariposa Grove, 33 ft. diameter, 1861
13. Yosemite Valley No. 1, c. 1865-66
14. View from Camp Grove, Yosemite, 1861
15. Yosemite Valley No. 5, c. 1865-66